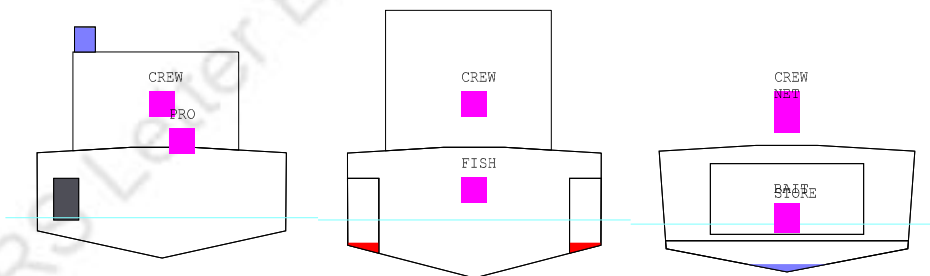
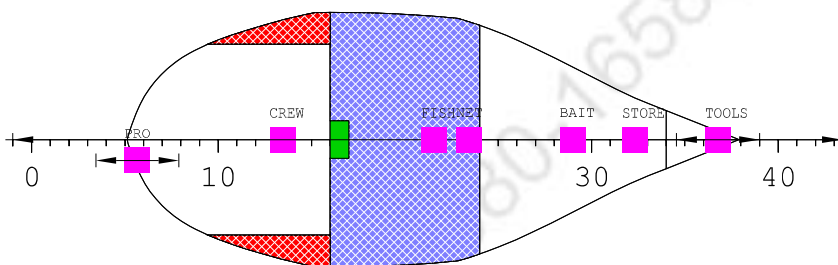
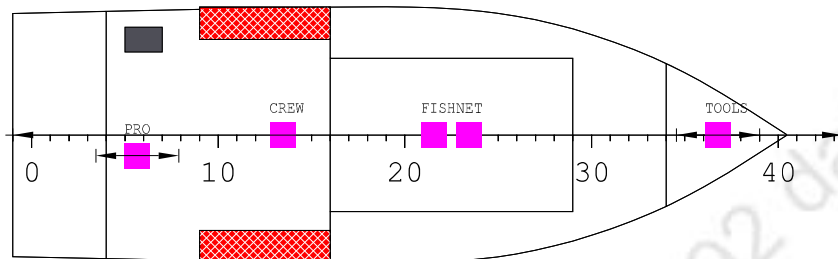
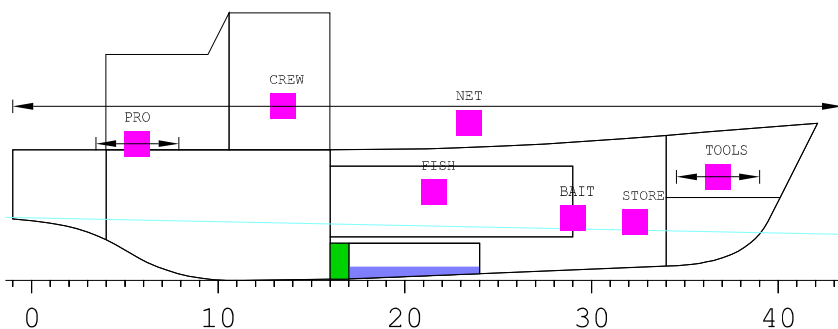


ARR. 10% CONS & 40% CATCH W/O ICE



Machinery Sp.	STORE	Cold Room Store
General spaces	Accommodation	Wheelhouse
Diesel Oil	Fresh Water	Void
BIO TOILET	BALLAST WATER	

ARR. 10% CONS & 40% CATCH W/O ICE

Floating Position - Intact condition

Draught at AP (moulded)	1.520 m
Draught at FP (moulded)	1.145 m
Mean Draught (moulded)	1.332 m

Trim (+ by Bow)	-0.375 m
Heel (+ PS)	0.0 deg

KM above moulded BL	4.589 m
KG above moulded BL	2.377 m
GM0 (solid)	2.212 m
Free Surface Correction	0.422 m
GM (liquid)	1.790 m
Density of Water	1.025 t/m ³

LCB : 8.3537044142907 m Fwd of AP
 LCF : 7.8327085023158 m Fwd of AP
 MCT : 1.07 tm/cm
 TPC : 0.94 t/cm

LOAD SUMMARY TABLE

NAME	MASS t	LCG m	TCG m	VCG m
BAIT	0.0	0.000	0.000	0.000
BIO TOILET	0.5	3.150	2.300	1.900
BALLAST WATER	0.3	7.875	0.000	0.489
CREW	0.6	6.500	0.000	4.200
Diesel Oil	0.7	6.433	0.000	0.749
FISH	6.0	10.150	0.000	2.130
Fresh Water	1.3	7.964	0.370	1.351
FISH NET	6.0	11.000	0.000	3.800
PROVISION	0.2	3.000	-0.500	3.300
STORE	0.2	15.000	0.000	1.400
TOOLS	1.0	17.000	0.000	2.500
Deadweight	16.9	10.119	0.094	2.675
Lightweight	52.0	7.820	-0.030	2.280
Deadweight	16.9	10.119	0.094	2.675
Total weight	68.8	8.384	0.000	2.377

100643/2021/Fisheries-DOF

FV-R35

Yard No.- TBD

Preliminary Stability Manual

Loading Conditions

Chapter 4

Fishing Vessel

31-03-2021

Diesel Oil (Density 0.860 t/m3)

NAME	PURP	FILL %	MASS t	VOL m3	FRSM tm
R.FOTK.1P	DO	9.5	0.3	0.4	0.00
R.FOTK.1S	DO	9.5	0.3	0.4	0.00
TOTAL			0.7	0.8	0.00

Fresh Water 1.00 t/m3

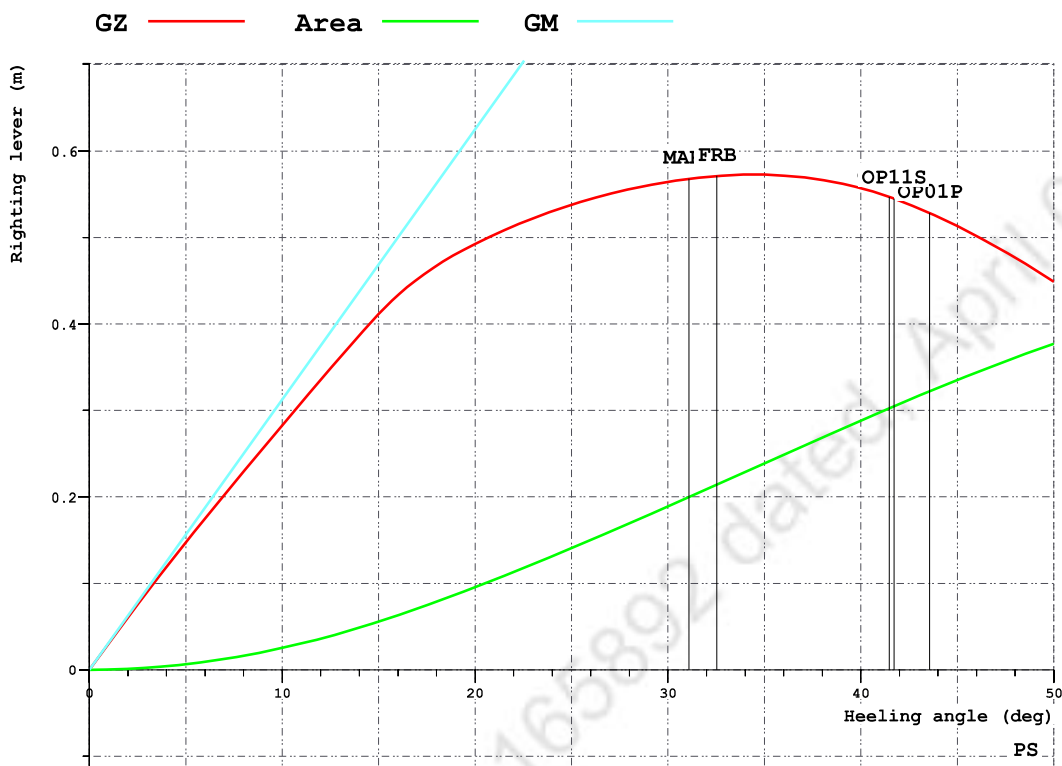
NAME	PURP	FILL %	MASS t	VOL m3	FRSM tm
R.FWTK	FW	9.5	1.0	1.0	29.05
R.FWTK_OVER	FW	95.0	0.3	0.3	0.00
TOTAL			1.3	1.3	29.05

Slurry Ice Water 1.025 t/m3

Fish Hold Drain Water 1.025 t/m3

NAME	PURP	FILL %	MASS t	VOL m3	FRSM tm
R.DRAIN.TK	BW	100.0	0.3	0.3	0.00
TOTAL			0.3	0.3	0.00

INTACT STABILITY CHECK PLOT



INTACT STABILITY CRITERIA

RCR	TEXT	REQ
V.AREA30	Area under GZ curve up to 30 deg	0.055
V.AREA40	Area under GZ curve up to 40 deg.	0.090
V.AREA3040	Area under GZ curve between 30 and 40 deg	0.030
V.GZ0.2	Min. GZ > 0.2	0.200
V.MAXGZ25	Max. GZ at an angle > 25 deg.	25.000
V.GM0.35	GM > 0.35 m	0.350
V.IMOWEATHER	IMO weather criterion	1.000
2008IS-A2.3.1.2	Heeling angle due to steady wind <16 or <=80% of deck imm.	16.000

RCR	ATTN	UNIT	STAT
V.AREA30	0.189	mrاد	OK
V.AREA40	0.288	mrاد	OK
V.AREA3040	0.099	mrاد	OK
V.GZ0.2	0.573	m	OK
V.MAXGZ25	34.446	deg	OK
V.GM0.35	1.790	m	OK
V.IMOWEATHER	1.498		OK
2008IS-A2.3.1.2	2.879	deg	OK

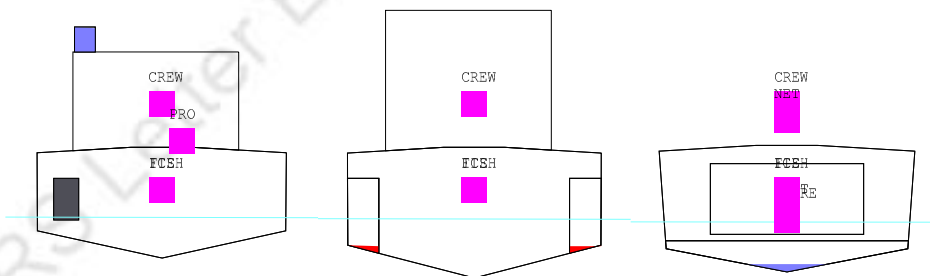
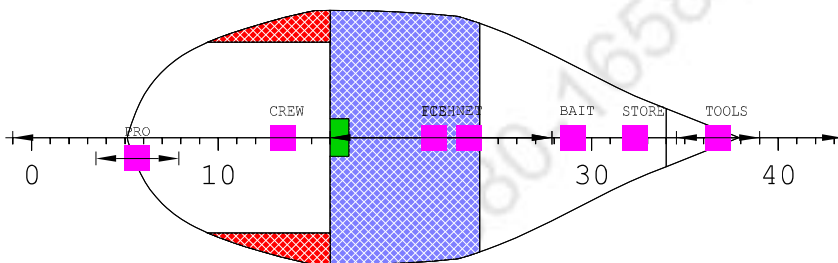
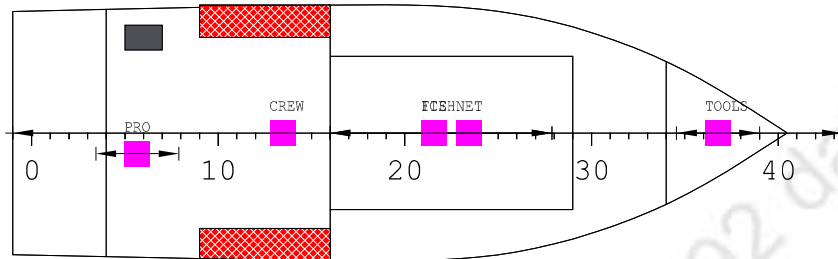
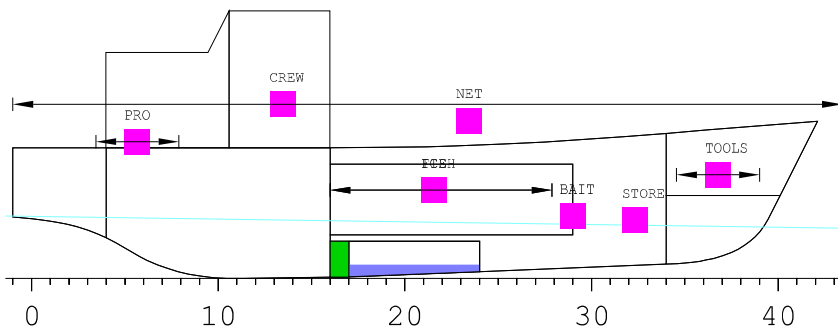
GZ CURVE DATA

HEEL deg	T m	TR m	GZ m	AREA mrad
0.0	1.332	-0.375	0.000	0.000
5.0	1.324	-0.349	0.147	0.007
10.0	1.301	-0.284	0.282	0.025
15.0	1.256	-0.197	0.411	0.056
20.0	1.180	-0.101	0.493	0.096
30.0	0.952	0.107	0.564	0.189
40.0	0.644	0.322	0.557	0.288
50.0	0.309	0.491	0.449	0.377

RELEVANT OPENINGS

NAME	TEXT	WT	X m	Y m	Z m	IMMA deg	IMMR m
OP01P	FO TANK PORT	UNPROTECTED	5.400	2.980	3.450	43.6	2.040
OP02S	FO TANK STBD	UNPROTECTED	5.400	-2.980	3.450	-	2.040
OP03P	FW TANK PORT	UNPROTECTED	8.550	3.022	3.450	41.5	2.104
OP04S	FW TANK STBD	UNPROTECTED	8.550	-3.022	3.450	-	2.104
OP05S	E/R IN	UNPROTECTED	5.500	-0.330	7.200	-	5.791
OP06S	E/R OUT	UNPROTECTED	2.690	-0.725	6.066	-	4.600
OP07S	MAIN ENG IN	UNPROTECTED	2.690	-1.450	4.100	-	2.635
OP08S	MAIN ENG OUT	UNPROTECTED	2.690	-1.470	4.100	-	2.635
OP09S	DG EXHAUST	UNPROTECTED	2.690	-1.490	4.100	-	2.635
OP10S	VOID TANK	UNPROTECTED	18.275	-0.088	4.141	-	2.993
OP11S	DRAIN TANK	UNPROTECTED	8.000	3.022	3.450	41.7	2.093
OP12S	E/R VENTILAT.	WEATHERTIGHT	2.690	-1.900	4.100	-	2.635

ARR. 10% CONS & 40% CATCH WITH ICE



Machinery Sp.	STORE	Cold Room Store
General spaces	Accommodation	Wheelhouse
Diesel Oil	Fresh Water	Void
BIO TOILET	BALLAST WATER	

ARR. 10% CONS & 40% CATCH WITH ICE

Floating Position - Intact condition

Draught at AP (moulded)	1.507 m
Draught at FP (moulded)	1.241 m
Mean Draught (moulded)	1.374 m

Trim (+ by Bow)	-0.266 m
Heel (+ PS)	0.1 deg

KM above moulded BL	4.443 m
KG above moulded BL	2.365 m
GM0 (solid)	2.078 m
Free Surface Correction	0.403 m
GM (liquid)	1.675 m
Density of Water	1.025 t/m ³

LCB :	8.4943278454794 m Fwd of AP
LCF :	7.8887977805403 m Fwd of AP
MCT :	1.08 tm/cm
TPC :	0.94 t/cm

LOAD SUMMARY TABLE

NAME	MASS t	LCG m	TCG m	VCG m
BAIT	0.2	13.500	0.000	1.500
BIO TOILET	0.5	3.150	2.300	1.900
BALLAST WATER	0.3	7.875	0.000	0.489
CREW	0.6	6.500	0.000	4.200
Diesel Oil	0.3	6.612	0.000	0.695
FISH	6.0	10.150	0.000	2.130
Fresh Water	1.3	7.964	0.370	1.351
ICE	3.5	10.150	0.000	2.130
FISH NET	6.0	11.000	0.000	3.800
PROVISION	0.0	0.000	0.000	0.000
STORE	0.2	15.000	0.000	1.400
TOOLS	1.0	17.000	0.000	2.500
Deadweight	20.1	10.315	0.085	2.586
Lightweight	52.0	7.820	-0.030	2.280
Deadweight	20.1	10.315	0.085	2.586
Total weight	72.0	8.515	0.002	2.365

100643/2021/Fisheries-DOF

FV-R35

Yard No.- TBD

Preliminary Stability Manual

Loading Conditions

Chapter 4

Fishing Vessel

31-03-2021

Diesel Oil (Density 0.860 t/m3)

NAME	PURP	FILL %	MASS t	VOL m3	FRSM tm
R.FOTK.1P	DO	5.0	0.2	0.2	0.00
R.FOTK.1S	DO	5.0	0.2	0.2	0.00
TOTAL			0.3	0.4	0.00

Fresh Water 1.00 t/m3

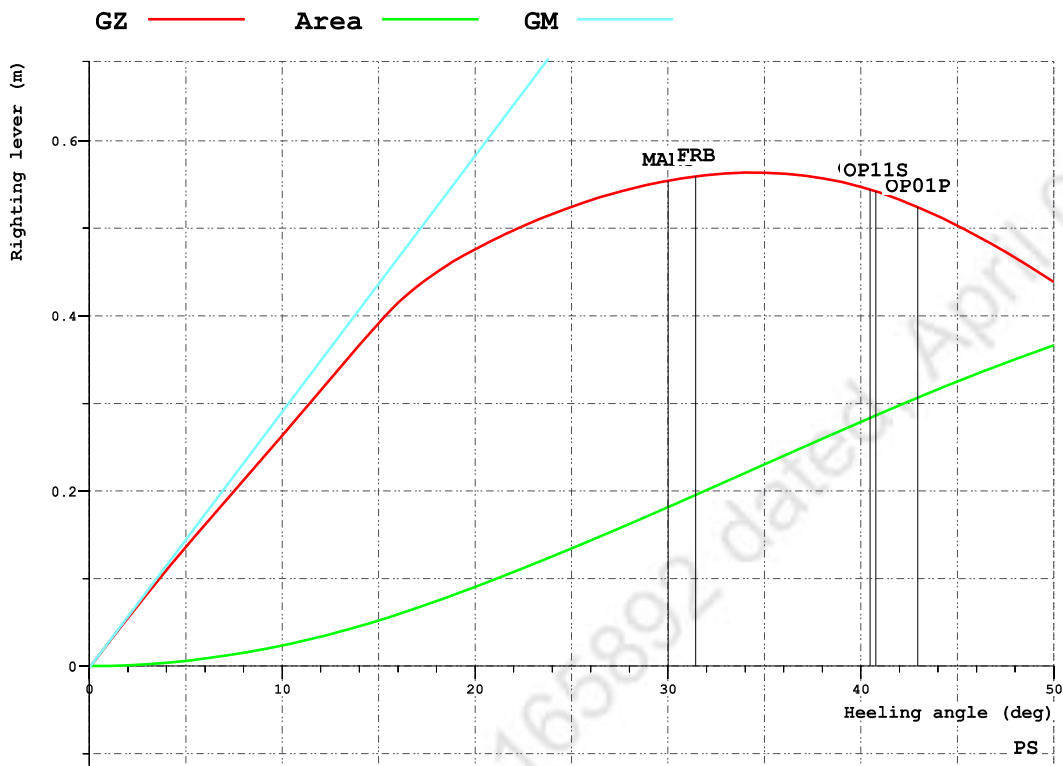
NAME	PURP	FILL %	MASS t	VOL m3	FRSM tm
R.FWTK	FW	9.5	1.0	1.0	29.05
R.FWTK_OVER	FW	95.0	0.3	0.3	0.00
TOTAL			1.3	1.3	29.05

Slurry Ice Water 1.025 t/m3

Fish Hold Drain Water 1.025 t/m3

NAME	PURP	FILL %	MASS t	VOL m3	FRSM tm
R.DRAIN.TK	BW	100.0	0.3	0.3	0.00
TOTAL			0.3	0.3	0.00

INTACT STABILITY CHECK PLOT



INTACT STABILITY CRITERIA

RCR	TEXT	REQ
V.AREA30	Area under GZ curve up to 30 deg	0.055
V.AREA40	Area under GZ curve up to 40 deg.	0.090
V.AREA3040	Area under GZ curve between 30 and 40 deg	0.030
V.GZ0.2	Min. GZ > 0.2	0.200
V.MAXGZ25	Max. GZ at an angle > 25 deg.	25.000
V.GM0.35	GM > 0.35 m	0.350
V.IMOWEATHER	IMO weather criterion	1.000
2008IS-A2.3.1.2	Heeling angle due to steady wind <16 or <=80% of deck imm.	16.000

RCR	ATTN	UNIT	STAT
V.AREA30	0.181	mrاد	OK
V.AREA40	0.279	mrاد	OK
V.AREA3040	0.098	mrاد	OK
V.GZ0.2	0.564	m	OK
V.MAXGZ25	34.470	deg	OK
V.GM0.35	1.675	m	OK
V.IMOWEATHER	1.524		OK
2008IS-A2.3.1.2	2.956	deg	OK

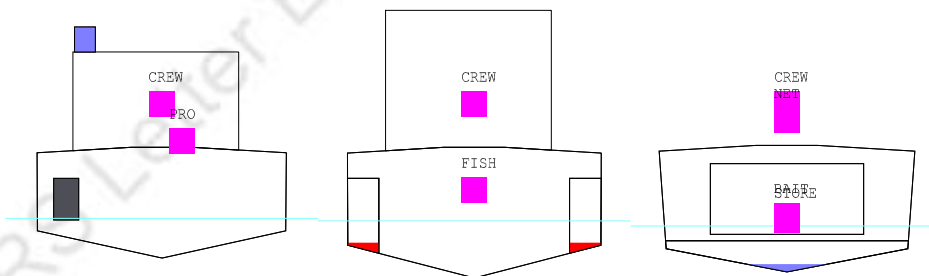
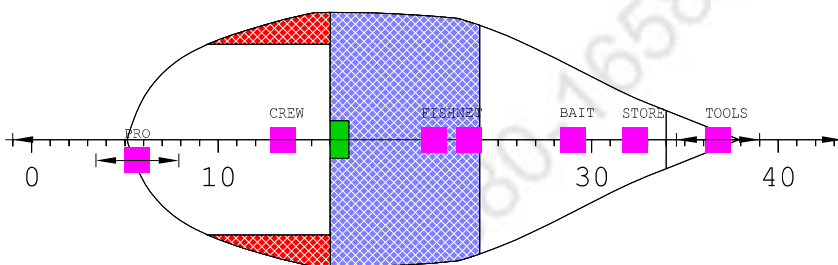
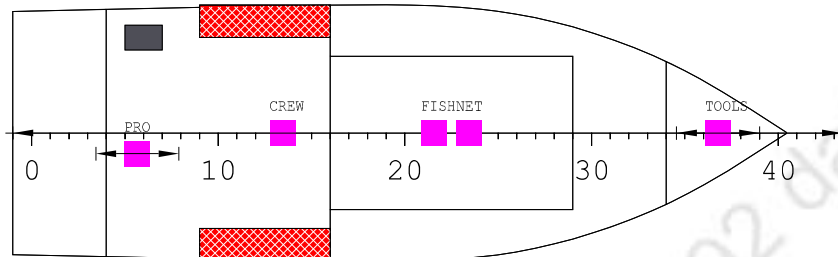
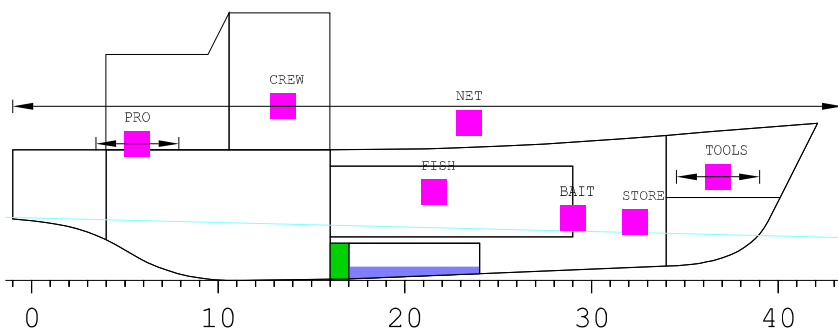
GZ CURVE DATA

HEEL deg	T m	TR m	GZ m	AREA mrad
0.0	1.374	-0.266	-0.002	0.000
0.1	1.374	-0.266	0.000	0.000
5.0	1.366	-0.239	0.136	0.006
10.0	1.342	-0.174	0.263	0.023
15.0	1.298	-0.083	0.392	0.052
20.0	1.225	0.017	0.476	0.090
30.0	0.998	0.228	0.554	0.181
40.0	0.694	0.442	0.547	0.279
50.0	0.362	0.609	0.439	0.366

RELEVANT OPENINGS

NAME	TEXT	WT	X m	Y m	Z m	IMMA deg	IMMR m
OP01P	FO TANK PORT	UNPROTECTED	5.400	2.980	3.450	43.0	2.017
OP02S	FO TANK STBD	UNPROTECTED	5.400	-2.980	3.450	-	2.025
OP03P	FW TANK PORT	UNPROTECTED	8.550	3.022	3.450	40.5	2.063
OP04S	FW TANK STBD	UNPROTECTED	8.550	-3.022	3.450	-	2.070
OP05S	E/R IN	UNPROTECTED	5.500	-0.330	7.200	-	5.772
OP06S	E/R OUT	UNPROTECTED	2.690	-0.725	6.066	-	4.598
OP07S	MAIN ENG IN	UNPROTECTED	2.690	-1.450	4.100	-	2.633
OP08S	MAIN ENG OUT	UNPROTECTED	2.690	-1.470	4.100	-	2.633
OP9S	DG EXHAUST	UNPROTECTED	2.690	-1.490	4.100	-	2.633
OP10S	VOID TANK	UNPROTECTED	18.275	-0.088	4.141	-	2.898
OP11S	DRAIN TANK	UNPROTECTED	8.000	3.022	3.450	40.8	2.055
OP12S	E/R VENTILAT.	WEATHERTIGHT	2.690	-1.900	4.100	-	2.634

ARR. 10% CONS & 20% CATCH W/O ICE



Machinery Sp.	STORE	Cold Room Store
General spaces	Accommodation	Wheelhouse
Diesel Oil	Fresh Water	Void
BIO TOILET	BALLAST WATER	

ARR. 10% CONS & 20% CATCH W/O ICE

Floating Position - Intact condition

Draught at AP (moulded)	1.517 m
Draught at FP (moulded)	1.073 m
Mean Draught (moulded)	1.295 m

Trim (+ by Bow)	-0.444 m
Heel (+ PS)	0.0 deg

KM above moulded BL	4.727 m
KG above moulded BL	2.388 m
GM0 (solid)	2.339 m
Free Surface Correction	0.441 m
GM (liquid)	1.898 m
Density of Water	1.025 t/m ³

LCB : 8.267033450373 m Fwd of AP
 LCF : 7.8104720100997 m Fwd of AP
 MCT : 1.06 tm/cm
 TPC : 0.94 t/cm

LOAD SUMMARY TABLE

NAME	MASS t	LCG m	TCG m	VCG m
BAIT	0.0	0.000	0.000	0.000
BIO TOILET	0.5	3.150	2.300	1.900
BALLAST WATER	0.3	7.875	0.000	0.489
CREW	0.6	6.500	0.000	4.200
Diesel Oil	0.7	6.433	0.000	0.749
FISH	3.0	10.150	0.000	2.130
Fresh Water	1.3	7.964	0.370	1.351
FISH NET	6.0	11.000	0.000	3.800
PROVISION	0.2	3.000	-0.500	3.300
STORE	0.2	15.000	0.000	1.400
TOOLS	1.0	17.000	0.000	2.500
Deadweight	13.9	10.112	0.114	2.792
Lightweight	52.0	7.820	-0.030	2.280
Deadweight	13.9	10.112	0.114	2.792
Total weight	65.8	8.303	0.000	2.388

100643/2021/Fisheries-DOF

FV-R35

Yard No.- TBD

Preliminary Stability Manual

Loading Conditions

Chapter 4

Fishing Vessel

31-03-2021

Diesel Oil (Density 0.860 t/m3)

NAME	PURP	FILL %	MASS t	VOL m3	FRSM tm
R.FOTK.1P	DO	9.5	0.3	0.4	0.00
R.FOTK.1S	DO	9.5	0.3	0.4	0.00
TOTAL			0.7	0.8	0.00

Fresh Water 1.00 t/m3

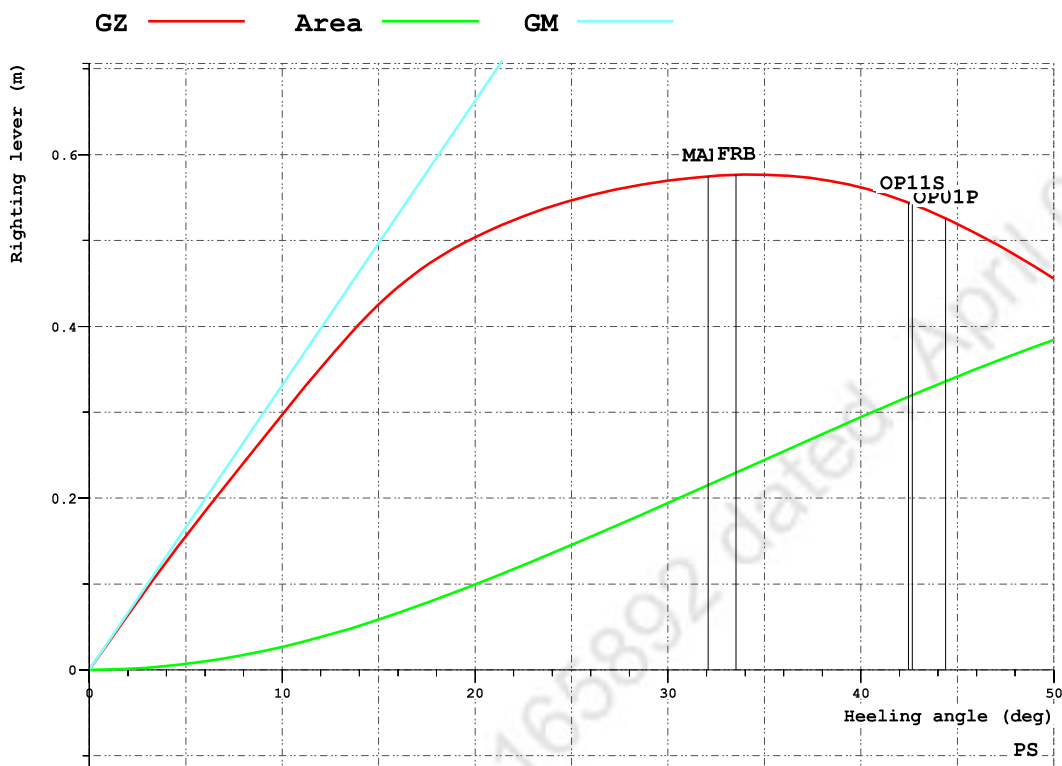
NAME	PURP	FILL %	MASS t	VOL m3	FRSM tm
R.FWTK	FW	9.5	1.0	1.0	29.05
R.FWTK_OVER	FW	95.0	0.3	0.3	0.00
TOTAL			1.3	1.3	29.05

Slurry Ice Water 1.025 t/m3

Fish Hold Drain Water 1.025 t/m3

NAME	PURP	FILL %	MASS t	VOL m3	FRSM tm
R.DRAIN.TK	BW	100.0	0.3	0.3	0.00
TOTAL			0.3	0.3	0.00

INTACT STABILITY CHECK PLOT



INTACT STABILITY CRITERIA

RCR	TEXT	REQ
V.AREA30	Area under GZ curve up to 30 deg	0.055
V.AREA40	Area under GZ curve up to 40 deg.	0.090
V.AREA3040	Area under GZ curve between 30 and 40 deg	0.030
V.GZ0.2	Min. GZ > 0.2	0.200
V.MAXGZ25	Max. GZ at an angle > 25 deg.	25.000
V.GM0.35	GM > 0.35 m	0.350
V.IMOWEATHER	IMO weather criterion	1.000
2008IS-A2.3.1.2	Heeling angle due to steady wind <16 or <=80% of deck imm.	16.000

RCR	ATTN	UNIT	STAT
V.AREA30	0.194	mrاد	OK
V.AREA40	0.294	mrاد	OK
V.AREA3040	0.100	mrاد	OK
V.GZ0.2	0.577	m	OK
V.MAXGZ25	34.402	deg	OK
V.GM0.35	1.898	m	OK
V.IMOWEATHER	1.452		OK
2008IS-A2.3.1.2	2.880	deg	OK

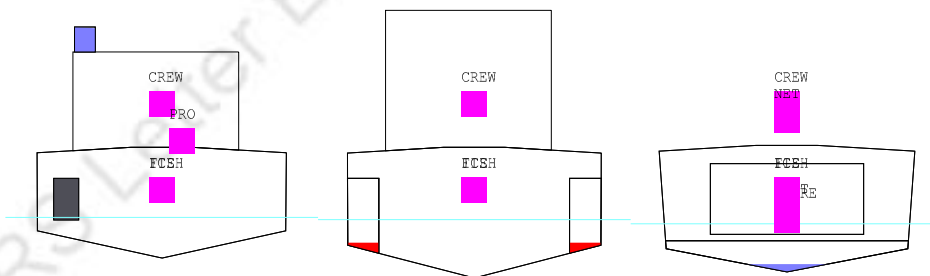
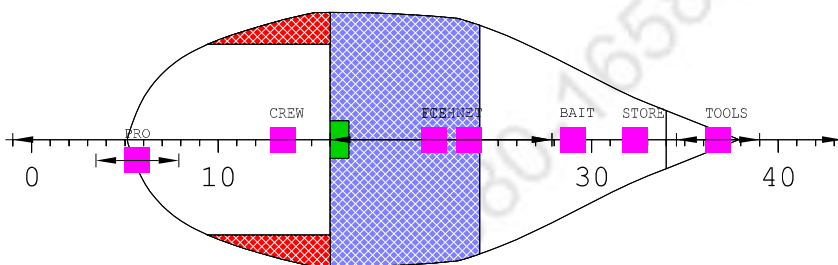
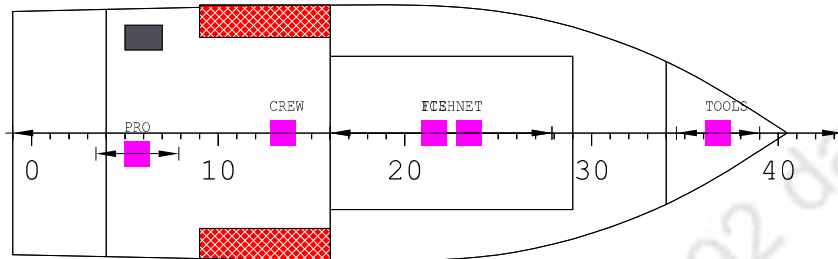
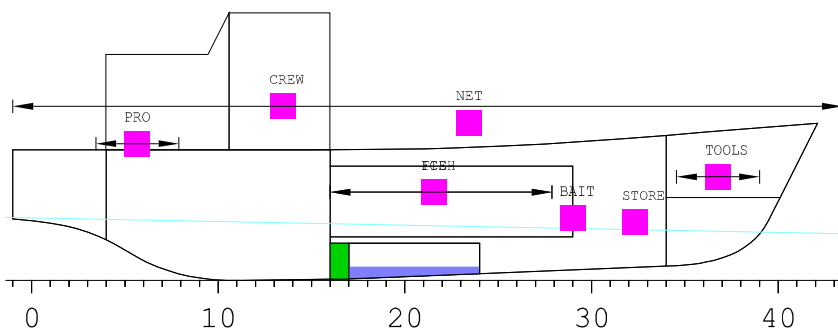
GZ CURVE DATA

HEEL deg	T m	TR m	GZ m	AREA mrad
0.0	1.295	-0.444	0.000	0.000
5.0	1.287	-0.416	0.156	0.007
10.0	1.264	-0.350	0.297	0.027
15.0	1.216	-0.264	0.425	0.058
20.0	1.139	-0.170	0.504	0.099
30.0	0.908	0.038	0.570	0.194
40.0	0.598	0.255	0.562	0.294
50.0	0.259	0.430	0.456	0.384

RELEVANT OPENINGS

NAME	TEXT	WT	X m	Y m	Z m	IMMA deg	IMMR m
OP01P	FO TANK PORT	UNPROTECTED	5.400	2.980	3.450	44.4	2.063
OP02S	FO TANK STBD	UNPROTECTED	5.400	-2.980	3.450	-	2.063
OP03P	FW TANK PORT	UNPROTECTED	8.550	3.022	3.450	42.5	2.139
OP04S	FW TANK STBD	UNPROTECTED	8.550	-3.022	3.450	-	2.139
OP05S	E/R IN	UNPROTECTED	5.500	-0.330	7.200	-	5.814
OP06S	E/R OUT	UNPROTECTED	2.690	-0.725	6.066	-	4.613
OP07S	MAIN ENG IN	UNPROTECTED	2.690	-1.450	4.100	-	2.647
OP08S	MAIN ENG OUT	UNPROTECTED	2.690	-1.470	4.100	-	2.647
OP09S	DG EXHAUST	UNPROTECTED	2.690	-1.490	4.100	-	2.647
OP10S	VOID TANK	UNPROTECTED	18.275	-0.088	4.141	-	3.064
OP11S	DRAIN TANK	UNPROTECTED	8.000	3.022	3.450	42.7	2.125
OP12S	E/R VENTILAT.	WEATHERTIGHT	2.690	-1.900	4.100	-	2.647

ARR. 10% CONS & 20% CATCH WITH ICE



Machinery Sp.	STORE	Cold Room Store
General spaces	Accommodation	Wheelhouse
Diesel Oil	Fresh Water	Void
BIO TOILET	BALLAST WATER	

ARR. 10% CONS & 20% CATCH WITH ICE

Floating Position - Intact condition

Draught at AP (moulded)	1.520 m
Draught at FP (moulded)	1.156 m
Mean Draught (moulded)	1.338 m

Trim (+ by Bow)	-0.364 m
Heel (+ PS)	0.0 deg

KM above moulded BL	4.567 m
KG above moulded BL	2.375 m
GM0 (solid)	2.192 m
Free Surface Correction	0.419 m
GM (liquid)	1.773 m
Density of Water	1.025 t/m ³

LCB :	8.3674393840678 m Fwd of AP
LCF :	7.8360863871138 m Fwd of AP
MCT :	1.08 tm/cm
TPC :	0.94 t/cm

LOAD SUMMARY TABLE

NAME	MASS t	LCG m	TCG m	VCG m
BAIT	0.0	0.000	0.000	0.000
BIO TOILET	0.5	3.150	2.300	1.900
BALLAST WATER	0.3	7.875	0.000	0.489
CREW	0.6	6.500	0.000	4.200
Diesel Oil	0.7	6.433	0.000	0.749
FISH	3.0	10.150	0.000	2.130
Fresh Water	1.3	7.964	0.370	1.351
ICE	3.5	10.150	0.000	2.130
FISH NET	6.0	11.000	0.000	3.800
PROVISION	0.2	3.000	-0.500	3.300
STORE	0.2	15.000	0.000	1.400
TOOLS	1.0	17.000	0.000	2.500
Deadweight	17.4	10.120	0.091	2.659
Lightweight	52.0	7.820	-0.030	2.280
Deadweight	17.4	10.120	0.091	2.659
Total weight	69.3	8.397	0.000	2.375

100643/2021/Fisheries-DOF

FV-R35

Yard No.- TBD

Preliminary Stability Manual

Loading Conditions

Chapter 4

Fishing Vessel

31-03-2021

Diesel Oil (Density 0.860 t/m3)

NAME	PURP	FILL %	MASS t	VOL m3	FRSM tm
R.FOTK.1P	DO	9.5	0.3	0.4	0.00
R.FOTK.1S	DO	9.5	0.3	0.4	0.00
TOTAL			0.7	0.8	0.00

Fresh Water 1.00 t/m3

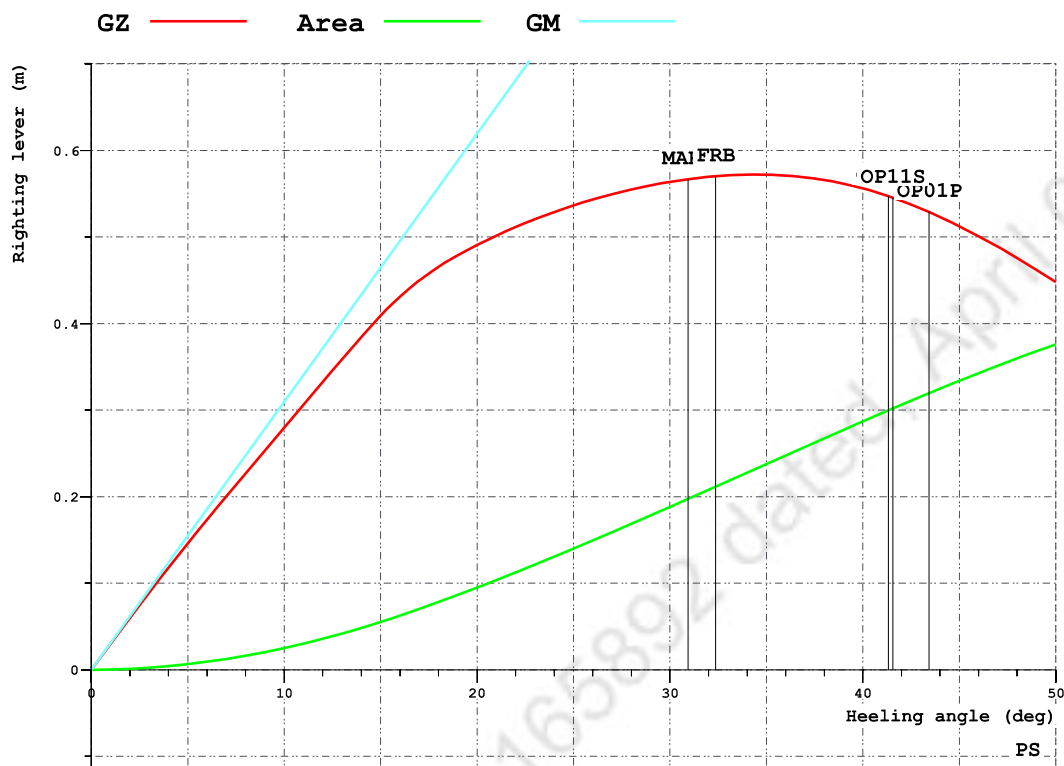
NAME	PURP	FILL %	MASS t	VOL m3	FRSM tm
R.FWTK	FW	9.5	1.0	1.0	29.05
R.FWTK_OVER	FW	95.0	0.3	0.3	0.00
TOTAL			1.3	1.3	29.05

Slurry Ice Water 1.025 t/m3

Fish Hold Drain Water 1.025 t/m3

NAME	PURP	FILL %	MASS t	VOL m3	FRSM tm
R.DRAIN.TK	BW	100.0	0.3	0.3	0.00
TOTAL			0.3	0.3	0.00

INTACT STABILITY CHECK PLOT



INTACT STABILITY CRITERIA

RCR	TEXT	REQ
V.AREA30	Area under GZ curve up to 30 deg	0.055
V.AREA40	Area under GZ curve up to 40 deg.	0.090
V.AREA3040	Area under GZ curve between 30 and 40 deg	0.030
V.GZ0.2	Min. GZ > 0.2	0.200
V.MAXGZ25	Max. GZ at an angle > 25 deg.	25.000
V.GM0.35	GM > 0.35 m	0.350
V.IMOWEATHER	IMO weather criterion	1.000
2008IS-A2.3.1.2	Heeling angle due to steady wind <16 or <=80% of deck imm.	16.000

RCR	ATTN	UNIT	STAT
V.AREA30	0.188	mrاد	OK
V.AREA40	0.287	mrاد	OK
V.AREA3040	0.099	mrاد	OK
V.GZ0.2	0.572	m	OK
V.MAXGZ25	34.444	deg	OK
V.GM0.35	1.773	m	OK
V.IMOWEATHER	1.506		OK
2008IS-A2.3.1.2	2.878	deg	OK

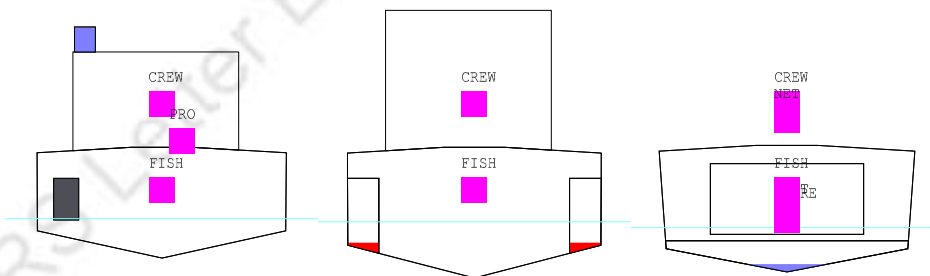
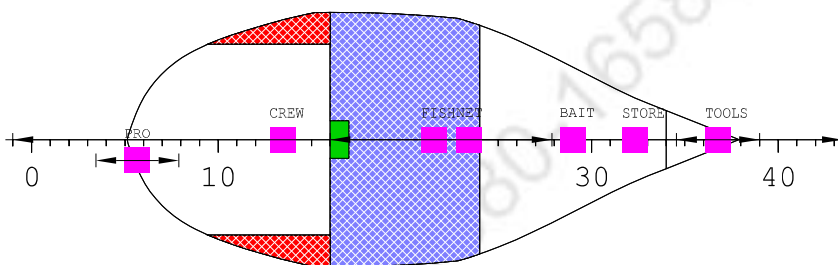
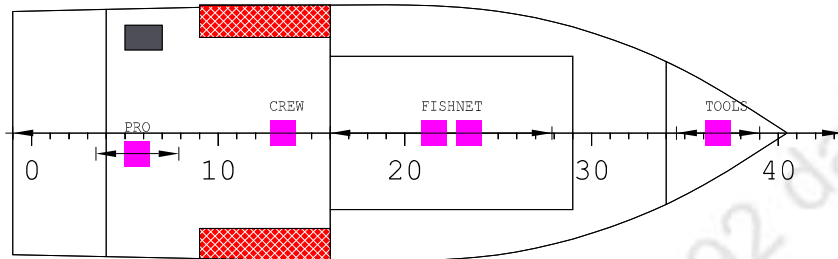
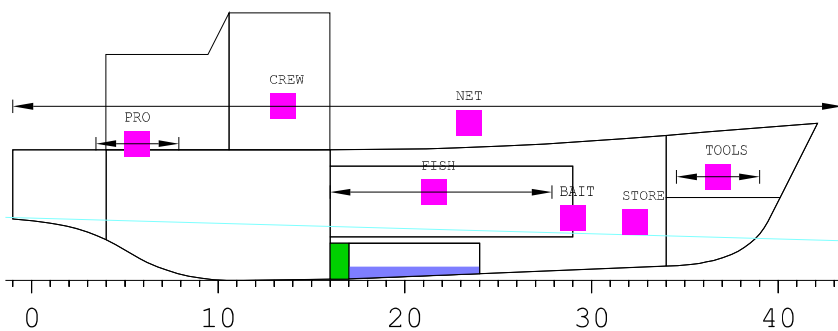
GZ CURVE DATA

HEEL deg	T m	TR m	GZ m	AREA mrad
0.0	1.338	-0.364	0.000	0.000
5.0	1.330	-0.339	0.146	0.006
10.0	1.307	-0.274	0.280	0.025
15.0	1.262	-0.186	0.409	0.055
20.0	1.187	-0.090	0.491	0.095
30.0	0.959	0.119	0.564	0.188
40.0	0.652	0.332	0.556	0.287
50.0	0.317	0.500	0.448	0.376

RELEVANT OPENINGS

NAME	TEXT	WT	X m	Y m	Z m	IMMA deg	IMMR m
OP01P	FO TANK PORT	UNPROTECTED	5.400	2.980	3.450	43.4	2.036
OP02S	FO TANK STBD	UNPROTECTED	5.400	-2.980	3.450	-	2.036
OP03P	FW TANK PORT	UNPROTECTED	8.550	3.022	3.450	41.3	2.098
OP04S	FW TANK STBD	UNPROTECTED	8.550	-3.022	3.450	-	2.098
OP05S	E/R IN	UNPROTECTED	5.500	-0.330	7.200	-	5.787
OP06S	E/R OUT	UNPROTECTED	2.690	-0.725	6.066	-	4.598
OP07S	MAIN ENG IN	UNPROTECTED	2.690	-1.450	4.100	-	2.632
OP08S	MAIN ENG OUT	UNPROTECTED	2.690	-1.470	4.100	-	2.632
OP09S	DG EXHAUST	UNPROTECTED	2.690	-1.490	4.100	-	2.632
OP10S	VOID TANK	UNPROTECTED	18.275	-0.088	4.141	-	2.982
OP11S	DRAIN TANK	UNPROTECTED	8.000	3.022	3.450	41.6	2.088
OP12S	E/R VENTILAT.	WEATHERTIGHT	2.690	-1.900	4.100	-	2.632

ARR. 10% CONS & 0% CATCH W/O ICE



Machinery Sp.	STORE	Cold Room Store
General spaces	Accommodation	Wheelhouse
Diesel Oil	Fresh Water	Void
BIO TOILET	BALLAST WATER	

ARR. 10% CONS & 0% CATCH W/O ICE

Floating Position - Intact condition

Draught at AP (moulded)	1.515 m
Draught at FP (moulded)	1.001 m
Mean Draught (moulded)	1.258 m

Trim (+ by Bow)	-0.514 m
Heel (+ PS)	0.0 deg

KM above moulded BL	4.880 m
KG above moulded BL	2.400 m
GM0 (solid)	2.479 m
Free Surface Correction	0.462 m
GM (liquid)	2.017 m
Density of Water	1.025 t/m ³

LCB :	8.1723173522092 m Fwd of AP
LCF :	7.7804060088759 m Fwd of AP
MCT :	1.04 tm/cm
TPC :	0.94 t/cm

LOAD SUMMARY TABLE

NAME	MASS t	LCG m	TCG m	VCG m
BAIT	0.0	0.000	0.000	0.000
BIO TOILET	0.5	3.150	2.300	1.900
BALLAST WATER	0.3	7.875	0.000	0.489
CREW	0.6	6.500	0.000	4.200
Diesel Oil	0.7	6.433	0.000	0.749
FISH	0.0	0.000	0.000	0.000
Fresh Water	1.3	7.964	0.370	1.351
FISH NET	6.0	11.000	0.000	3.800
PROVISION	0.2	3.000	-0.500	3.300
STORE	0.2	15.000	0.000	1.400
TOOLS	1.0	17.000	0.000	2.500
Deadweight	10.9	10.102	0.145	2.975
Lightweight	52.0	7.820	-0.030	2.280
Deadweight	10.9	10.102	0.145	2.975
Total weight	62.8	8.215	0.000	2.400

100643/2021/Fisheries-DOF

FV-R35

Yard No.- TBD

Preliminary Stability Manual

Loading Conditions

Chapter 4

Fishing Vessel

31-03-2021

Diesel Oil (Density 0.860 t/m3)

NAME	PURP	FILL %	MASS t	VOL m3	FRSM tm
R.FOTK.1P	DO	9.5	0.3	0.4	0.00
R.FOTK.1S	DO	9.5	0.3	0.4	0.00
TOTAL			0.7	0.8	0.00

Fresh Water 1.00 t/m3

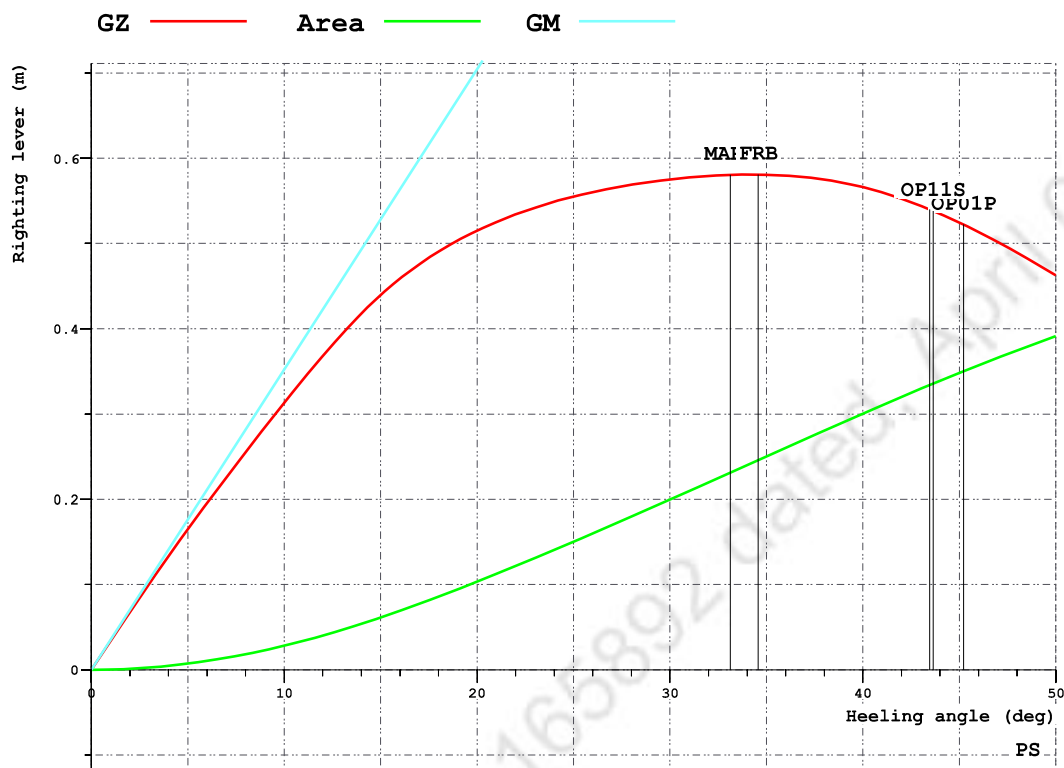
NAME	PURP	FILL %	MASS t	VOL m3	FRSM tm
R.FWTK	FW	9.5	1.0	1.0	29.05
R.FWTK_OVER	FW	95.0	0.3	0.3	0.00
TOTAL			1.3	1.3	29.05

Slurry Ice Water 1.025 t/m3

Fish Hold Drain Water 1.025 t/m3

NAME	PURP	FILL %	MASS t	VOL m3	FRSM tm
R.DRAIN.TK	BW	100.0	0.3	0.3	0.00
TOTAL			0.3	0.3	0.00

INTACT STABILITY CHECK PLOT



INTACT STABILITY CRITERIA

RCR	TEXT	REQ
V.AREA30	Area under GZ curve up to 30 deg	0.055
V.AREA40	Area under GZ curve up to 40 deg.	0.090
V.AREA3040	Area under GZ curve between 30 and 40 deg	0.030
V.GZ0.2	Min. GZ > 0.2	0.200
V.MAXGZ25	Max. GZ at an angle > 25 deg.	25.000
V.GM0.35	GM > 0.35 m	0.350
V.IMOWEATHER	IMO weather criterion	1.000
2008IS-A2.3.1.2	Heeling angle due to steady wind <16 or <=80% of deck imm.	16.000

RCR	ATTN	UNIT	STAT
V.AREA30	0.200	mrاد	OK
V.AREA40	0.300	mrاد	OK
V.AREA3040	0.101	mrاد	OK
V.GZ0.2	0.581	m	OK
V.MAXGZ25	34.234	deg	OK
V.GM0.35	2.017	m	OK
V.IMOWEATHER	1.401		OK
2008IS-A2.3.1.2	2.886	deg	OK

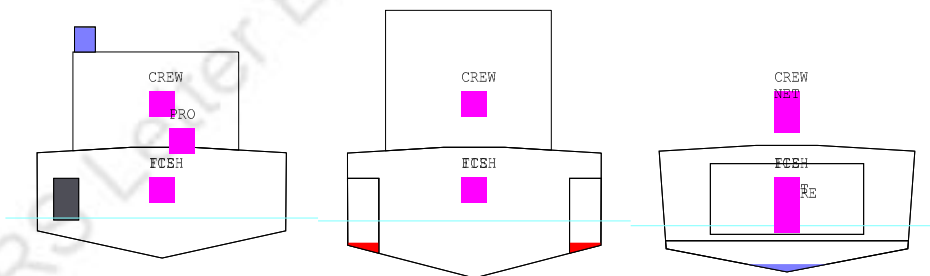
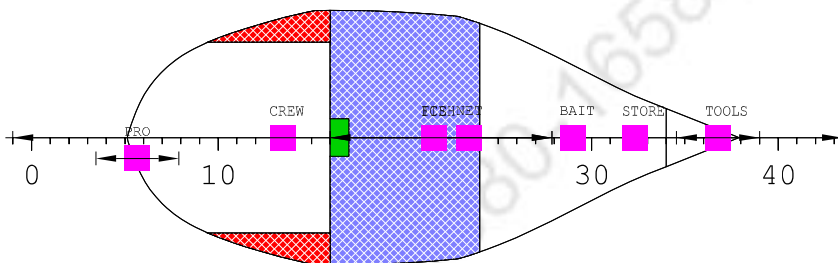
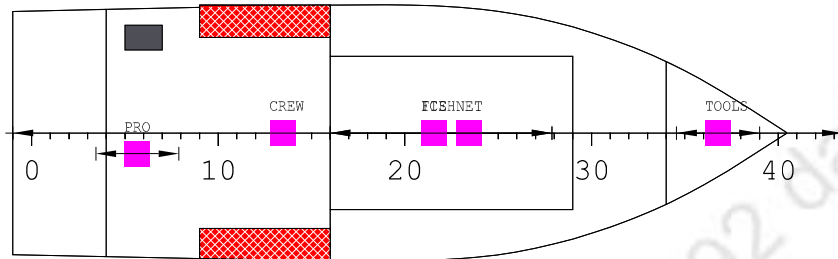
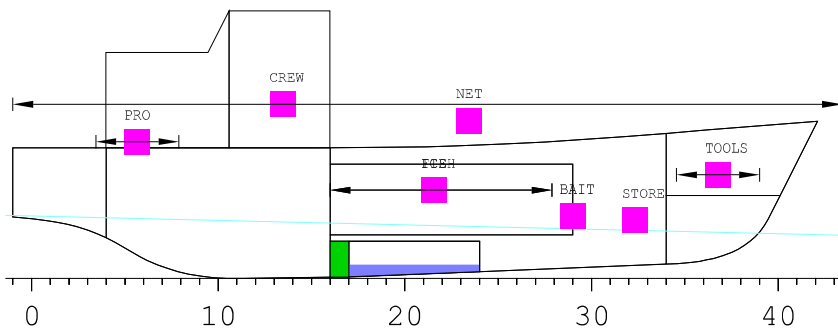
GZ CURVE DATA

HEEL deg	T m	TR m	GZ m	AREA mrad
0.0	1.258	-0.514	0.000	0.000
5.0	1.250	-0.485	0.165	0.007
10.0	1.226	-0.418	0.313	0.028
15.0	1.176	-0.335	0.440	0.061
20.0	1.097	-0.242	0.515	0.103
30.0	0.864	-0.035	0.575	0.200
40.0	0.551	0.185	0.566	0.300
50.0	0.208	0.364	0.463	0.391

RELEVANT OPENINGS

NAME	TEXT	WT	X m	Y m	Z m	IMMA deg	IMMR m
OP01P	FO TANK PORT	UNPROTECTED	5.400	2.980	3.450	45.2	2.085
OP02S	FO TANK STBD	UNPROTECTED	5.400	-2.980	3.450	-	2.085
OP03P	FW TANK PORT	UNPROTECTED	8.550	3.022	3.450	43.5	2.173
OP04S	FW TANK STBD	UNPROTECTED	8.550	-3.022	3.450	-	2.173
OP05S	E/R IN	UNPROTECTED	5.500	-0.330	7.200	-	5.837
OP06S	E/R OUT	UNPROTECTED	2.690	-0.725	6.066	-	4.625
OP07S	MAIN ENG IN	UNPROTECTED	2.690	-1.450	4.100	-	2.659
OP08S	MAIN ENG OUT	UNPROTECTED	2.690	-1.470	4.100	-	2.659
OP09S	DG EXHAUST	UNPROTECTED	2.690	-1.490	4.100	-	2.659
OP10S	VOID TANK	UNPROTECTED	18.275	-0.088	4.141	-	3.135
OP11S	DRAIN TANK	UNPROTECTED	8.000	3.022	3.450	43.6	2.158
OP12S	E/R VENTILAT.	WEATHERTIGHT	2.690	-1.900	4.100	-	2.659

ARR. 10% CONS & 0% CATCH WITH ICE



Machinery Sp.	STORE	Cold Room Store
General spaces	Accommodation	Wheelhouse
Diesel Oil	Fresh Water	Void
BIO TOILET	BALLAST WATER	

ARR. 10% CONS & 0% CATCH WITH ICE

Floating Position - Intact condition

Draught at AP (moulded)	1.517 m
Draught at FP (moulded)	1.085 m
Mean Draught (moulded)	1.301 m

Trim (+ by Bow)	-0.432 m
Heel (+ PS)	0.0 deg

KM above moulded BL	4.703 m
KG above moulded BL	2.386 m
GM0 (solid)	2.317 m
Free Surface Correction	0.438 m
GM (liquid)	1.879 m
Density of Water	1.025 t/m ³

LCB :	8.2820084188697 m Fwd of AP
LCF :	7.8151821403472 m Fwd of AP
MCT :	1.06 tm/cm
TPC :	0.94 t/cm

LOAD SUMMARY TABLE

NAME	MASS t	LCG m	TCG m	VCG m
BAIT	0.0	0.000	0.000	0.000
BIO TOILET	0.5	3.150	2.300	1.900
BALLAST WATER	0.3	7.875	0.000	0.489
CREW	0.6	6.500	0.000	4.200
Diesel Oil	0.7	6.433	0.000	0.749
FISH	0.0	0.000	0.000	0.000
Fresh Water	1.3	7.964	0.370	1.351
ICE	3.5	10.150	0.000	2.130
FISH NET	6.0	11.000	0.000	3.800
PROVISION	0.2	3.000	-0.500	3.300
STORE	0.2	15.000	0.000	1.400
TOOLS	1.0	17.000	0.000	2.500
Deadweight	14.4	10.114	0.110	2.769
Lightweight	52.0	7.820	-0.030	2.280
Deadweight	14.4	10.114	0.110	2.769
Total weight	66.3	8.317	0.000	2.386

100643/2021/Fisheries-DOF

FV-R35

Yard No.- TBD

Preliminary Stability Manual

Loading Conditions

Chapter 4

Fishing Vessel

31-03-2021

Diesel Oil (Density 0.860 t/m3)

NAME	PURP	FILL %	MASS t	VOL m3	FRSM tm
R.FOTK.1P	DO	9.5	0.3	0.4	0.00
R.FOTK.1S	DO	9.5	0.3	0.4	0.00
TOTAL			0.7	0.8	0.00

Fresh Water 1.00 t/m3

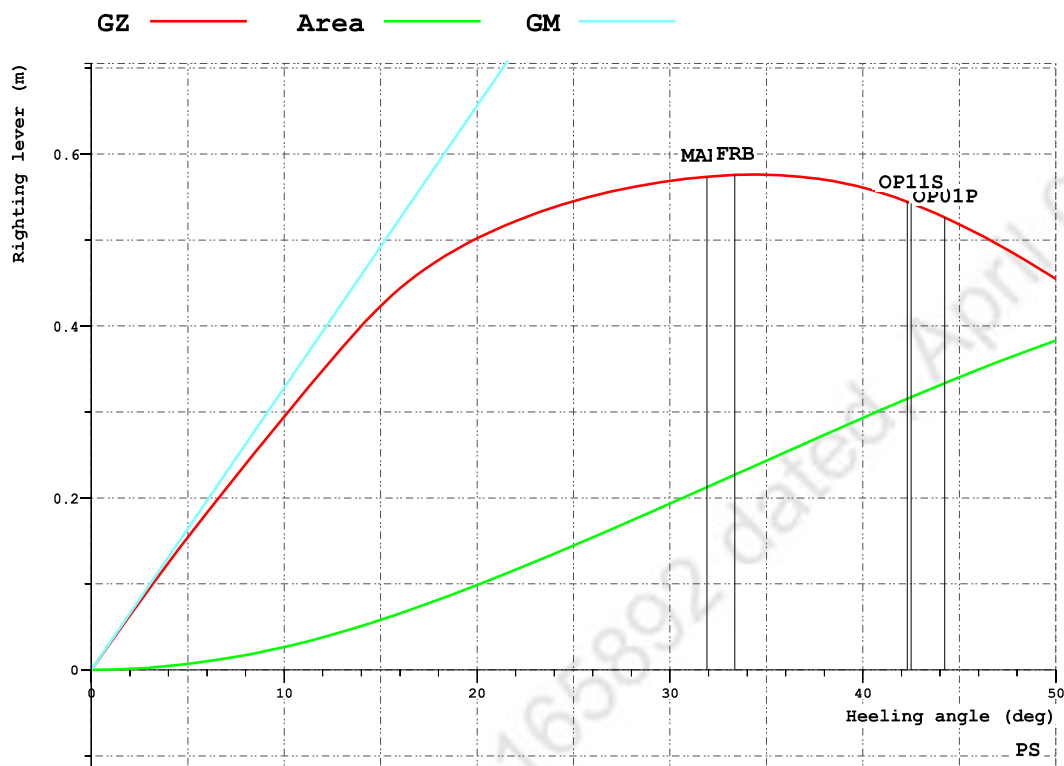
NAME	PURP	FILL %	MASS t	VOL m3	FRSM tm
R.FWTK	FW	9.5	1.0	1.0	29.05
R.FWTK_OVER	FW	95.0	0.3	0.3	0.00
TOTAL			1.3	1.3	29.05

Slurry Ice Water 1.025 t/m3

Fish Hold Drain Water 1.025 t/m3

NAME	PURP	FILL %	MASS t	VOL m3	FRSM tm
R.DRAIN.TK	BW	100.0	0.3	0.3	0.00
TOTAL			0.3	0.3	0.00

INTACT STABILITY CHECK PLOT



INTACT STABILITY CRITERIA

RCR	TEXT	REQ
V.AREA30	Area under GZ curve up to 30 deg	0.055
V.AREA40	Area under GZ curve up to 40 deg.	0.090
V.AREA3040	Area under GZ curve between 30 and 40 deg	0.030
V.GZ0.2	Min. GZ > 0.2	0.200
V.MAXGZ25	Max. GZ at an angle > 25 deg.	25.000
V.GM0.35	GM > 0.35 m	0.350
V.IMOWEATHER	IMO weather criterion	1.000
2008IS-A2.3.1.2	Heeling angle due to steady wind <16 or <=80% of deck imm.	16.000

RCR	ATTN	UNIT	STAT
V.AREA30	0.193	mrاد	OK
V.AREA40	0.293	mrاد	OK
V.AREA3040	0.100	mrاد	OK
V.GZ0.2	0.576	m	OK
V.MAXGZ25	34.417	deg	OK
V.GM0.35	1.879	m	OK
V.IMOWEATHER	1.460		OK
2008IS-A2.3.1.2	2.880	deg	OK

GZ CURVE DATA

HEEL deg	T m	TR m	GZ m	AREA mrad
0.0	1.301	-0.432	0.000	0.000
5.0	1.294	-0.405	0.154	0.007
10.0	1.270	-0.339	0.295	0.026
15.0	1.223	-0.253	0.423	0.058
20.0	1.146	-0.158	0.502	0.099
30.0	0.915	0.050	0.569	0.193
40.0	0.606	0.267	0.561	0.293
50.0	0.267	0.441	0.455	0.383

RELEVANT OPENINGS

NAME	TEXT	WT	X m	Y m	Z m	IMMA deg	IMMR m
OP01P	FO TANK PORT	UNPROTECTED	5.400	2.980	3.450	44.3	2.059
OP02S	FO TANK STBD	UNPROTECTED	5.400	-2.980	3.450	-	2.059
OP03P	FW TANK PORT	UNPROTECTED	8.550	3.022	3.450	42.3	2.133
OP04S	FW TANK STBD	UNPROTECTED	8.550	-3.022	3.450	-	2.133
OP05S	E/R IN	UNPROTECTED	5.500	-0.330	7.200	-	5.810
OP06S	E/R OUT	UNPROTECTED	2.690	-0.725	6.066	-	4.610
OP07S	MAIN ENG IN	UNPROTECTED	2.690	-1.450	4.100	-	2.645
OP08S	MAIN ENG OUT	UNPROTECTED	2.690	-1.470	4.100	-	2.645
OP09S	DG EXHAUST	UNPROTECTED	2.690	-1.490	4.100	-	2.645
OP10S	VOID TANK	UNPROTECTED	18.275	-0.088	4.141	-	3.052
OP11S	DRAIN TANK	UNPROTECTED	8.000	3.022	3.450	42.5	2.120
OP12S	E/R VENTILAT.	WEATHERTIGHT	2.690	-1.900	4.100	-	2.645